

ELEMENTS 2024

Newsletter 3

Its nearly time to camp!



ARRIVAL & DEPARTURE TIMES

You can find your unit arrival & departure times [by clicking here](#). Please ensure that you keep to these times as we will have around 400 people arriving & then departing the site. Please do not arrive early, you won't be allowed on site until your allotted time.



REMINDER ABOUT TENTS - URGENT!

Don't forget to let your subcamp leader know how many & rough sizes of the tents you are bringing! We need this information to mark out a suitable area for your unit. Your subcamp leader has emailed you.

FORMS - LATEST UPDATE

REN- the deadline for part 2 to be sent to your commissioner is the 29th of June. Once you have approval to camp, please send a copy of your signed REN to events@girlguidingshropshire.org.uk by Sat 13th July 2024.

Health forms- please bring 2 copies of the completed health forms for all of your participants. *One of these you keep with you at camp and the 2nd copy should be handed to the camp office team on arrival.*

List of everyone attending - you will also need to complete and bring along a list of all volunteers and young members attending camp in your group which should be handed in to the camp office team on arrival. [Click here for form.](#)

Home contact list-please also bring 2 copies of your home contact list including the name of each participant (incl. volunteers) & 2 emergency contact numbers for each, & also the details of your home contact. *A copy to keep with you & the 2nd to hand in to the camp office team on arrival.*



FIRST AID ARRANGEMENTS

If you are coming with your unit you will need to bring your own first aid kit. Remember you are responsible for first aid for your unit. There will be a central first aider on site available for emergencies.



POCKET MONEY

The recommended maximum for pocket money for young members is £20. We are a 'cash only' camp, please ask participants to bring a selection of change rather than large notes.

OASIS CAFE & CACTUS CORNER

During camp there will be the opportunity to visit the **Oasis Cafe** where participants can purchase a selection of refreshments & cakes. You will also be able to book a group cream tea at reasonable prices. **Cactus Corner** is our camp shop with a range of gifts, badges and keepsakes for sale.



REMINDERS

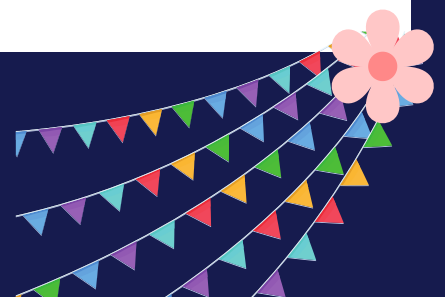
We have already shared the following key information with you in previous newsletters, but just as a reminder....

- All camp participants will require a packed lunch on Saturday lunch time. Full & part catered meals begin on Saturday evening.
- Bring decorations for your sub camp to match the theme of your element FIRE, AIR, WATER or EARTH
- Each participant needs to paint/decorate and bring a pebble to contribute to our opening and closing ceremonies. Brownies will do this activity at camp on Saturday 27th.
- Bring something fun & bright to wear for the evening parade, in your subcamp colour theme
- Newsletter 2 has a list of things for you to be considering as part of your preparations
- Check your camping equipment before you arrive! Poles, pegs, guy ropes, water containers etc. Bring extras of things you might need in an emergency
- Bringing gas appliances? Have your gas pipes & clips been changed in the last 3 years? Stock up on gas and check everything is in safe working order
- Have fun practicing bedding rolls with your unit & organise a meeting with parents/carers to discuss your plans



**Have you told us you are bringing a
camper van or caravan?**

Events@girlguidingshropshire.org.uk



Our final newsletter will be out at the beginning of July with your joining information. We are really looking forward to seeing you at camp!